



rising to new heights



COMMUNITY FOUNDATION OF WHITLEY COUNTY
Report of Gifts, Grants & Collaborations • 2019



"Conversation is different
in a community that works."

-Dr. Judith Redwine



Table Of CONTENTS

03	Director's Message	16-17	Next Level Whitley County
4-11	Endowed Funds	18-19	Financial Summary
12-13	Community Project Funds	20-29	Donors & Memorial Gifts
14-15	Grants	30	Board, Staff & Committees



DIRECTOR'S MESSAGE

lessons learned on the playground

Do you remember harboring a love/hate relationship with the teeter-totter when you were little? It was exhilarating to push off the gravel into the air, but that moment of joy was also laced with an element of fear. Would the kid on the other end decide to be a jerk and jump off? It's hard to forget the harsh reality of plummeting to the ground before your feet were set. We learned to choose our partners wisely. There's a lot that can be said about lessons learned on the playground and we are witness to their validity every day at the Community Foundation.

"Remember to Share"

In 2019 our Community Foundation was able to grant \$1.4 million to worthy non-profit organizations working hard to serve the needs of Whitley County, as well as to students pursuing continued education. That's lot of sharing! Every grant made, every scholarship awarded, was made possible thanks to the generosity of others. This report is really a reflection of 28 years of local giving. Over time, many Whitley County residents reflected on their lives and put careful thought into the activities, organizations and events that mattered to them or to their loved ones. By contributing to endowments – permanent, lasting investments, they honed in on the important places and things that should be shared within our community, forever.

"Take Turns"

Our Greater Good Fund was created to address changing needs within the community. As new challenges and opportunities emerge, our volunteer Grants Committee has the ability to recommend funding where it's needed the most. A list of grants awarded in 2019 shows that our donors helped to feed the hungry, enrich the lives of senior citizens, celebrate joy with the developmentally challenged, and allow children in foster care to experience the thrill of camping. It goes without saying, no two grant cycles are ever the same. As much as we would love to fund every good idea, we do our best to share our resources wisely, taking turns to support a variety of projects and offerings.

"Make Friends; You Can't Play Catch by Yourself"

This takes us back to the importance of choosing good partners. The Community Foundation fully stepped into the role of a civic convener in 2019. We couldn't have asked for a better group of leaders to be assembled at the table as issues including mental health, addiction, jail recidivism, and career training became our collective focus. Be sure to read more about Next Level Whitley County on pages 14 and 15. We're so much better working together! The collaborative partnership has truly taken philanthropy to a whole new level in Whitley County.

"Remember to Say Thanks"

If you recall teeter-totter issues, you're also likely to remember the sheer joy of swinging higher and higher with your feet pumping and wind in your face. If you were lucky, there was a friend on the ground, pushing you skyward. To our generous donors, dedicated committee volunteers, professional staff and knowledgeable Board of Directors – all who harbor a genuine love of Whitley County -- this is a heartfelt "thanks" for helping us rise to new heights.



September McConnell

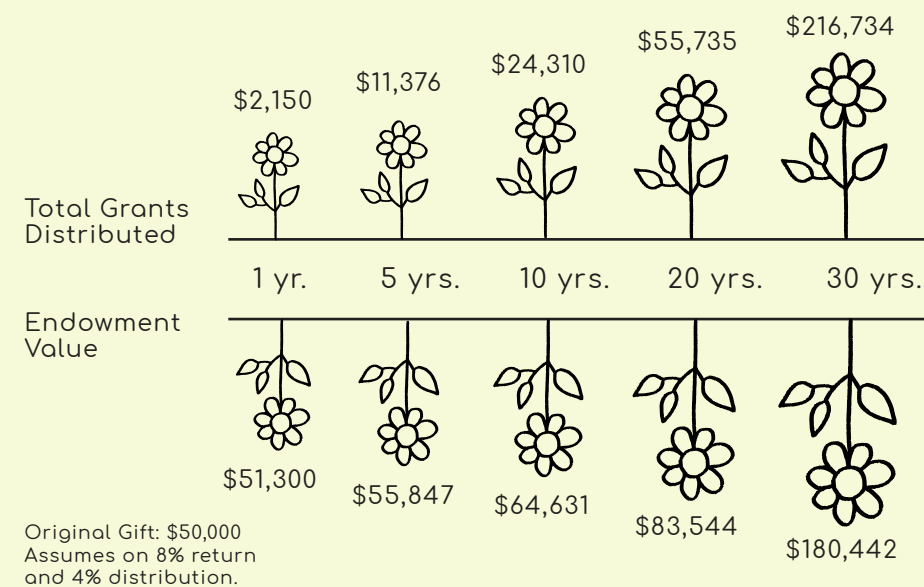
September McConnell, CEO
Community Foundation of Whitley County, Inc.

ENDOWED FUNDS

playing for keeps

Forever is a really long time but we are committed to the concept of “forever” through our endowment funds. Here’s how they work: When an endowment fund is established through a gift or gifts to the Community Foundation, we never spend the contribution. Ever. Instead the donation is wisely invested to produce earnings. A percentage of those earnings are used to fulfill the donor’s charitable intent in the form of grants – such as an annual scholarship award, or helping to send children to camp. Through a contractual fund agreement, the Community Foundation makes distributions pursuant to the donor’s intent. Typically, a portion of those earnings are set aside to ensure the fund continues to grow over time. As years go by, grants from endowment funds will far exceed the original gifts.

How Endowments Give Forever



An endowment fund for Camp Whitley ensures that the traditions of Tinkam Woods continue for generations to come.

Agency Funds

These endowment funds benefit the non-profit organizations for which they are named by creating a stable, annual income stream. While they benefit specific organizations, they are an asset of the Community Foundation.

ACRES Land Trust
B.A.B.E. Fund
W. Byron & Marian Bollinger South Whitley
Cleveland Township Library Fund
Camp Whitley Fund
The Center for Whitley County Youth Fund
Churubusco Public Library Fund
Faith Christian Academy Fund
Freedom Academy Fund
George Franklin Shultz YMCA Fund
Habitat for Humanity of Whitley County Fund
Mission 25 Fund
Junior Achievement Fund
Passages to the Future Fund
Peabody Library Endowment Fund
Simon J. Peabody Library Endowment Fund
TROY School Fund
The Honeywell Fund for Art Education
United Way of Whitley County Fund
Whitley County Council on Aging and Aged Fund
Whitley County Historical Society Fund
Whitley County Literacy Council Fund
Whitley County YMCA Fund
YWCA Whitley County Fund
Bernice Kessler Whitley County Humane Society Fund
Maryln Sellers Whitley County Humane Society Fund
Les Bills' Family Firemen's Christmas Fund



Our community lost lifetime resident Les Bills (far left) in 2019 but he will be remembered through a designated endowment that supports a family tradition he loved – the annual Christmas candy giveaway at the Columbia City Fire Department. Created by his son Chuck Bills in 2012, Les was delighted to be honored when he learned of the tribute.

Designated Funds

A designated fund is an ideal choice when you want to support one of more favorite nonprofits in perpetuity. When you endow your designated fund, your giving will provide a lasting legacy to sustain the nonprofits you select. Should any of your designated nonprofits cease to exist or change its mission, the Community Foundation will ensure that the funds are redirected to a similar organization that meets your charitable intent.

CCHS Speech & Debate Fund
Christian School Fund
Columbia City Firefighters Christmas Candy Fund
Columbia City Rotary Centennial Fund
Columbia City United Methodist Church Fund
Crooked Lake Conservation Fund est. by
John & Aileen Meier
Alan H. Fox U.S. Veterans Transportation Fund
Anita R. Baston Operating Fund
David & Barbara Bilger Family Fund
Dennis & Judith Hudson Commitment of the
Heart Award Fund
George Scott & Mildred Smith Gates Fund
Lloyd & Maryjane Geyer/Denzil & Betty
Schrader Memorial Fund
HANDS Fund
Imagination Library Fund
The Janet Hinen Giving a Helping Hand Fund
Donovan Kessler Little Swimmers Fund
Sherman & Marjorie M. Kneller Fund
Loon Lake Conservation Fund
Walter Malicki Whitko Art Fund
Margaret Priscilla Waterfall Whitley County
Dazzlers Fund
Methodist Federation of Social Action Fund
Mihsihkinaahkwa Pow Wow Fund
Old Settlers Foundation Operating Endowment Fund
Old Settlers Association Fund
Parkview Whitley Memorial Hospital Fund
George Franklin Schultz Fund
Terry Lee Smith, Sr. Memorial Fund
Theodore Schultz Fund
Sierra's Fund
Splash Pad (Columbia City) Fund
W. Byron & Marian E. Bollinger South Whitley
United Methodist Church Fund
Stepping Stones Childcare Endowment Fund
Whitley County Cancer Care Fund
YMCA Life Lessons Endowment Fund
Whitley County Hospice Fund
Whitley County EMS Fund

Discretionary Funds

A Discretionary Fund, also known as an Unrestricted Fund, is an ideal choice when you want to give where the need is the greatest at any point in time. Grants from these funds help communities and residents throughout Whitley County overcome obstacles, seize opportunities and thrive. You can establish and name an endowed unrestricted fund during your lifetime or create one through an estate plan. The Community Foundation has complete discretion in grant making.

Don Armstrong Community Fund
Don & Sharlene Berkshire Community Fund
Tim & Beth Bloom Community Fund
Jerry Busche Community Fund
Dekko Enhancement Fund
Gary & Ann Dillon Community Fund
Greg & Ann Fahl Community Fund
Max Fahl Unrestricted Endowment Fund
Ferber Family Fund
Donna K. Harl Community Fund
Don & Jane Langeloh Community Fund
Jean & Roger Long Community Fund

Pamela S. McCoy Fund in Memory of Russel and Evelyn Fahl
The Honorable Phil M. & The Honorable Patricia A. McNagny Community Fund
Jack & Judy Moore Community Fund
Andy & Toni More Community Fund
William & Barbara Overdeer Community Fund
Scientific & Regulatory Consultants Community Fund
Rosemary Steiner Community Fund
Clark Waterfall, DVM Community Fund
Whitley County Greater Good Fund
The Wood Family First Olive Fund

Donor Advised Funds

A Donor Advised fund is an easy and cost-effective way to support your favorite nonprofits anywhere in the country, at any time you choose. Gifts to your fund qualify for an immediate tax deduction, regardless of when you decide to recommend grants. Community Foundation staff will confirm that your recommended charities meet IRS requirements and then issue grant checks to the organizations. The donor retains an advisory capacity in recommending grants from the fund which is individually named and identified with reference to the donor, donors or donor family members.

Benton W. & Thelma L. Bloom Fund
Copp Family Fund
EDL Fund
M. Russel Fahl Family Fund
John & Laura Lefever Fund
James & September McConnell Family Fund
The Hon. Phil M. & Hon. Patricia A. McNagny Crooked Lake Conservation Fund
Steve & Gloria More Fund
C. Taron & Gloria Smith Endowment Fund

Field of Interest Funds

A Field of Interest fund allows donors to specify an interest area, either broadly or narrowly defined. The Foundation has discretion to make grants within the donor's interest area. Funds can be endowed, or principal may also be available for grants depending on donor intent.

Abilities Fund for Social Enrichment
Arts Alive! Fund
Centurylink Fund
Columbia City Rotary Centennial Fund
Dekko Childcare Enhancement Fund
Dominic & Susan Devito Fund
Shirley A. Gates Fund
Edwin E. & Flossie L. Heupel Good Samaritan Fund
Roy Kilby Youth Sports Endowment Fund
Oak Grove Church of God Children's Ministries Fund
John Slavich Fund for Whitley County Youth
Walter & Dorothy Weick Memorial Fund
Women's Giving Circle for Women's Health Fund

Scholarship Funds

A Scholarship fund allows donors to help students realize their educational dreams, or support the schools and universities of their choice. The founding donor determines the criteria for selection of scholarship recipients, and the Foundation administers the process of making the awards.

Whitley County 4H Beef Club Scholarship
Whitley County 4H Helping Hands Scholarship
Tyler Andreas Memorial Football Scholarship
Kenny Beck Changes in Latitude Memorial Scholarship
Diane R. Behrens Nursing Scholarship
Daniel E. Bolinger Memorial Scholarship
Bob Brittain Memorial Scholarship/CCHS Alumni Scholarship
The Buesching-Tucker Memorial Scholarship
Lawrence & Frida Bunnell Memorial Scholarship
Gene C. Carter Memorial Scholarship
Bernice Carver Scholarship of Hope
Churubusco High School Fine Arts Production/Theatopian Scholarship
Columbia City High School FFA Scholarship
Columbia City High School French Club Scholarship
Columbia City High School Memorial Scholarship
Columbia City High School Spanish Club Scholarship
Columbia City Rotary Scholarship
Class of '63 Scholarship
Joey Devito Memorial Scholarship
Devol Award
Irma & Donald Ferber Scholarship
Maxwell Roark Fizer Memorial Scholarship
Max Gandy Scholarship
Betsy Jayne Gates Memorial Scholarship
James E. & Janice M. Hammer Academic Team Scholarship
Timothy Hearld Memorial Scholarship
Andrea Norman Henry and John Anthony Norman Theater Scholarship
Ernest Earl Heimbach Scholarship
Dean Hoffman 4H Beef Scholarship
Randall & Patricia Holler Business Scholarship for Manchester University
Robert Hood Memorial Scholarship
Todd Jagger Memorial Scholarship
JAKES Scholarship
Gabrielle "Gabby" Jones Memorial Scholarship

Robert & Grace Karst R.N. Scholarship
Ben Konger Memorial Scholarship
Whitley County Korean War Veterans Memorial Scholarship
Margaret "Margo" Kaler Langohr Art Scholarship
Wilbert & Louise Luderman Scholarship Fund
The Malicki Family Scholarship
Brandon Wade Minier Memorial Scholarship
The Daniel Mullett "For the Love of a Child" Scholarship
Natalie Mason Mullan Scholarship
Tom Ness Memorial Scholarship



Shelby Mosier poses with her favorite partner during the 2019 4-H Fair. The Foundation holds scholarship funds that benefit long standing members of 4-H.

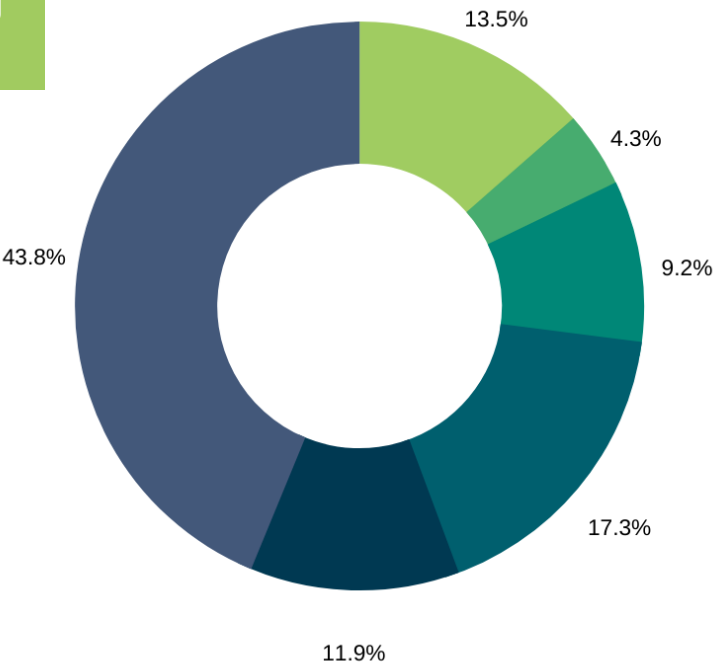
Scholarship Funds

Ohki Scholarship
 Tiffany N. Parker Memorial Scholarship
 Tina Parker Award Fund
 Richard “Kit” Redman Memorial Football Scholarship
 Becky J. Reed Girls Track Memorial Scholarship
 Eric Reed Memorial Scholarship
 Pat Reed Art Education Scholarship
 Daniel D. & Martha J. Rock Memorial Scholarship
 Paul Schmidt Football Scholarship
 Scientific and Regulatory Consultants Scholarship
 Joseph H. & Irene Shull Tri Kappa Memorial Scholarship
 Johnathan Lewis Simmons Memorial Scholarship
 Kenny Simon Scholarship
 Andy Spencer Memorial Scholarship
 Lucille L. Staples Business/Journalism Scholarship
 William D. Staples Athletic Scholarship
 Nicholas and Laurel Steill Scholarship
 Ashley Morgan Storm Memorial Scholarship

James Thompson Memorial Scholarship
 Alan Tio Advanced Manufacturing Scholarship
 Turtletown Players Scholarship
 The Unverzagt Family Memorial Scholarship
 Jerry Walker Memorial Scholarship
 Susie & Lee Waugh Scholarship
 Howard and Mimi Wherry Memorial Scholarship
 Senator Harold “Potch” Wheeler Memorial Scholarship
 Charles White Scholarship
 Whitley County Builders Association Scholarship
 Whitley County Retired Teachers’ Association Scholarship Fund
 Whitko Scholarship
 B.V. and Flossie Widney Memorial Scholarship
 Lester and Joy Worrick Memorial Scholarship Fund
 Megan Christine Young Memorial Scholarship
 The Young Family Fund
 Rely C. and Izora Zumbrun Education Scholarship

Fun Fact: In 2019 the Community Foundation of Whitley County held 185 different endowment funds.

- Agency Endowments (25) 13.52%
- Donor Advised Funds (8) 4.32%
- Field of Interest Funds (17) 9.18%
- Designated Funds (32) 17.31%
- Discretionary/Unrestricted Funds (22) 11.89%
- Scholarships (81) 43.78%



New Endowments within the Foundation in 2019

Terry Lee Smith Sr. Memorial Fund

Terry Smith was undoubtedly met with the final greeting “Well done, good and faithful servant!” While his passing was a tremendous loss to family and friends, his memory will live on through this fund which will provide support to assist in sending youth from Eberhard Lutheran Church to church camp.



Gabrielle “Gabby” Jones Memorial Scholarship

Originally established in 2014 by Kregg and Lanette Jones, the Gabrielle “Gabby” Jones Memorial Scholarship Fund was transferred to the Community Foundation in 2019. It honors the life of their daughter, Gabby, a vivacious young woman who left loved ones much too early due to illness. While in high school, Gabby excelled in softball, volleyball, and basketball. In 2013 she graduated from Churubusco High School in the top ten percent of her class and as a member of the National Honor Society. She then enrolled at Ivy Tech Community College. Her future was full of promise and success due in part to her great academic drive and intent to pursue a career in the medical field. An athlete, Gabby was active as a seventh grade volleyball coach at Churubusco Middle School and a youth soccer referee at Whitley County YMCA. She loved her family, friends, and pets and enjoyed outdoor activities including times at the lake, the beach, and camping.



Becky J. Reed Girls Track Scholarship Fund

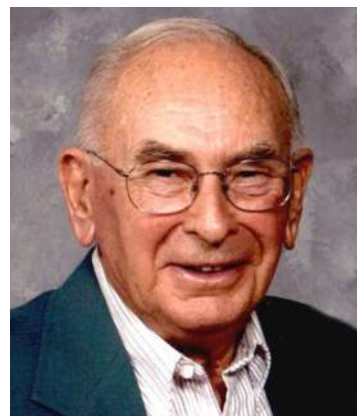
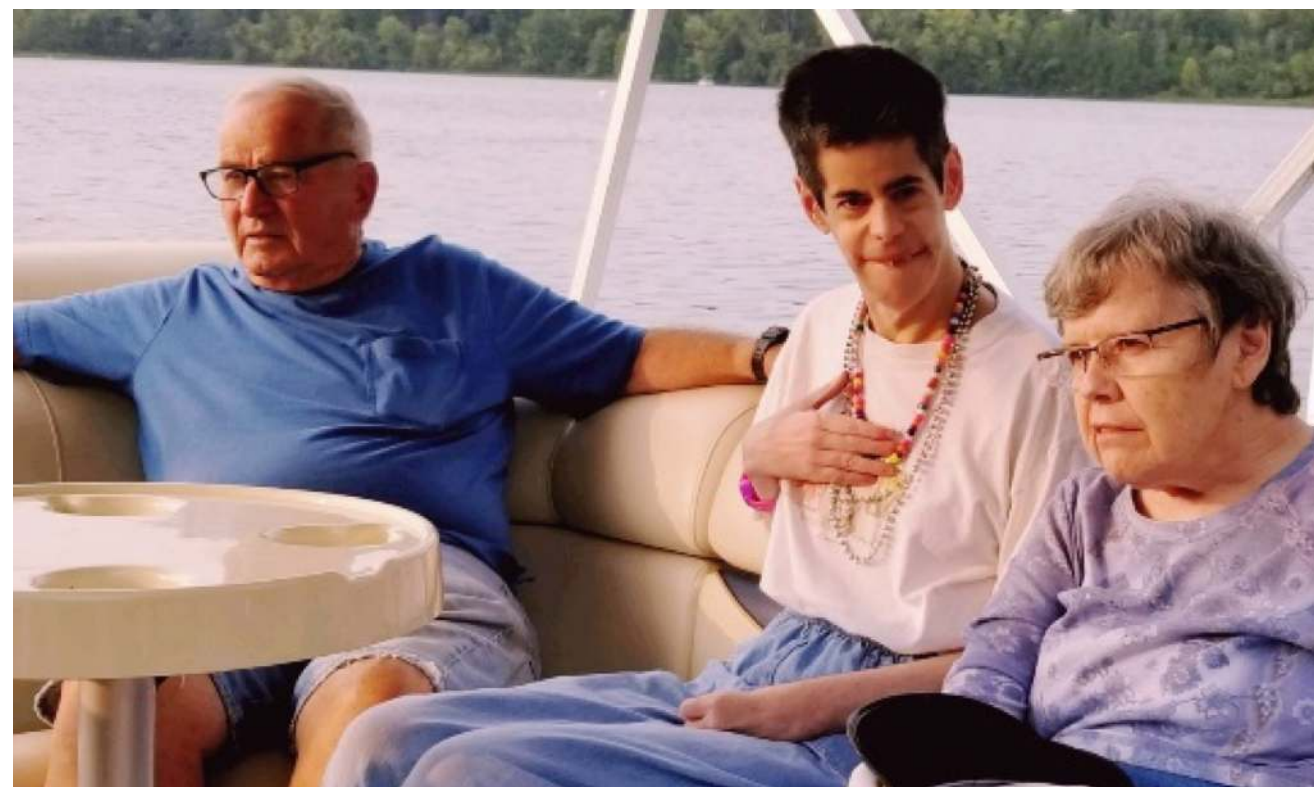
Established by her parents, Lawrence (Corky) & Bonnie Reed and family, this Fund will honor Becky’s prestigious athletic career at Columbia City High School. Becky was a pioneer of Girls’ Track at Columbia City High School in the 1970s. In a time when girls were first allowed to participate in the sport, she led the way to State in two events for three different years — 1974, 1975, and 1976. She also held the school records in the 100-yard dash, long jump and high jump for over two decades. While the records are impressive, to those lucky enough to know and love her, Becky’s lasting legacy will be her positive attitude, enthusiasm for competition, team spirit and great charisma. These are the characteristics her family hopes will be identified in the recipient of the annual award.



New Endowments within the Foundation in 2019

Dennis and Judith Hudson Commitment of the Heart Award Fund

Created in memory of Dennis “Denny” Hudson who passed away in 2019, and his wife Judy, this fund was created to annually honor a direct support professional who shows exemplary compassion to individuals with intellectual and/or physical disabilities while working with clients of Passages, Inc.



Pamela S. McCoy Fund in Memory of Russel and Evelyn Fahl

Pam McCoy established this discretionary fund in memory of her parents, Evelyn and Russel Fahl. Each year, grants will be made in their honor to support deserving charitable projects in Whitley County.

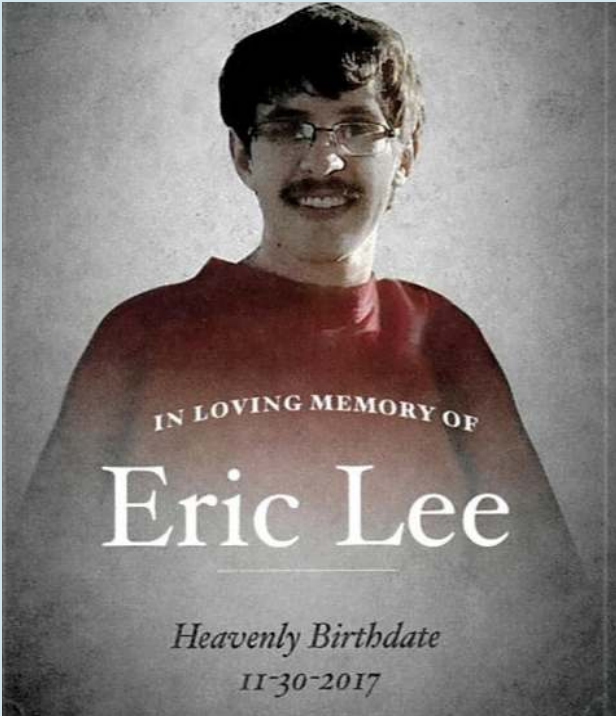
New Endowments within the Foundation in 2019

EDL Fund

Eric D. Lee was a loving individual with a ready smile who taught many people the meaning of love and acceptance. His mother Becky established this fund in celebration of his life and to carry his goodness forward. This donor-advised fund will honor Eric’s memory through charitable acts of kindness.

Max Fahl Unrestricted Endowment Fund

Max Fahl generously established this discretionary endowment to meet emerging needs in our community. It will provide grants now and for generations to come, all with the intent of supporting good things in Whitley County.



Columbia City Rotary Centennial Fund

The Columbia City Rotary Club celebrated 100 years of community involvement and servant leadership in May of 2019. To commemorate the outstanding achievement, members created an endowed Field of Interest Fund within the Community Foundation to support charitable, philanthropic projects for generations to come.



The Columbia City Rotary Club has been involved in serving our local communities for 100 years. With an ongoing commitment to service, Columbia City Rotary Club supports events like the annual community-wide Easter egg hunt held at Morsches Park for families to enjoy.

COMMUNITY PROJECT FUNDS



sharing our professional services

Established to assist small organizations with financial book-keeping for their charitable projects, the Community Foundation acts as a fiscal sponsor by holding non-permanent funds under our umbrella. Unlike gifts to endowments that can never be spent, gifts to non-permanent funds can be spent in their entirety. Gifts to these funds are tax-deductible as long as no goods or services were received in exchange for the contribution.

80/20 Foundation Trust
 Abbie Little Playground Fund
 Kenny Beck Scholarship
 Randy Bills Memorial Scholarship
 Boomerang Backpacks Fund
 CMBJ Waterfall Fund for Coesse School
 Camp STEAM Ahead Fund
 Camp Whitley Fund
 Chaplain Fund
 Children First Fund
 Christmas Parade Fund
 Churubusco Business Education Community Fund
 Churubusco High School Alumni and Friends Fund
 Churubusco Pool Fund
 Coesse PTO Fund
 Columbia City Aquatics Center Fund
 Columbia City Downtown Business Alliance Fund
 Columbia City High School Alumni Association Fund
 Columbia City High School Baseball Boosters Fund
 Columbia City High School Boys Basketball
 Booster Club Fund
 Columbia City High School Boys Golf Team
 Booster Club Fund
 Columbia City High School Cross Country Booster
 Club Fund
 Columbia City High School Girls Basketball
 Booster Club Fund
 Columbia City High School Boys Soccer Booster
 Club Fund
 Columbia City High School Girls Soccer Booster
 Club Fund

Columbia City High School Football Booster Club Fund
 Columbia City Rotary Morsches Park Sign Fund
 Columbia City Skate Park Fund
 Phyllis Crace Unrestricted Fund
 DeMoney-Grimes Life Sciences Scholarship
 Dime at a Time Achievement Award Fund
 Distinguished Young Women's Program Fund
 Edith Nylander Trust/Eberhard Lutheran Church Fund
 Eppleman Family Fund
 Russel & Evelyn Fahl Columbia City Aquatics Fund
 Faith Christian Academy PTO Fund
 Faith Christian Academy Expense Fund
 Friends of Concordia Cemetery Fund
 Friends of Fire and Police Fund
 Friends of the Peabody Library Fund
 CCHS FFA Boosters Fund
 Downtown Business Alliance Fund
 Gamble Bower Love Out Loud Fund
 G.A.P. Canaan Education Fund
 George & Lola Schrupf Fund
 H.A.N.D.S Foundation Fund
 Horizons of Hope Fund
 Tammy Horne Memorial Scholarship Fund
 Todd Jagger Memorial Scholarship Fund
 Junior Lady Eagles Basketball Fund
 Donovan Kessler Little Swimmers Fund
 Eugene and Rosalind Klingaman Family Fund
 Leatherneck Coffee Club Fund
 Nicholas Carson Linville Speech and Debate Fund
 Night to Shine Fund
 Little Turtle Elementary PTO Fund



The Columbia City Main Street Association now known as Columbia City Connect, has hosted several "Movies on the Square" for families to enjoy on the courthouse square in Downtown Columbia City.

Main Street Association Fund
 Mary Raber PIE Fund
 Micropulse Charity Fund
 Mihsihkinaahkwa Pow Wow Fund
 Northeast Indiana Warbirds Fund
 Northern Heights Parents in Education Fund
 Ohki Alley/EDC Fund
 Old Settlers Non-Permanent Fund
 Piggy Bank Pals
 The Potter's Hands Fund
 Rich Patch Union Church Fund
 Rob & Jill Marr Fund

Sharing His Love Scholarship
 South Whitley Camp Invention Fund
 South Whitley Community Facilities Committee Fund
 Jacob Tarleton Memorial Scholarship
 Vietnam Memorial Fund
 Chase Warner Memorial Scholarship Fund
 Whitley County Arts Commission Fund
 Whitley County Cares Fund
 Whitley County Dazzlers Fund
 Whitley County Domestic Violence Task Force Fund
 Whitley County Humane Shelter Fund

GRANTS



share!

A major part of the Community Foundation's mission involves partnering with our donors to invest their charitable dollars in causes they are passionate about. Our donors also trust us with discretionary funds which we pool together and invest. Based on understanding of county issues, the following grants were shared as a result of gifts to our Greater Good Fund.

Grantee	Program Name	Grant Amount
A Hope Center	Purchasing & operating ultrasound machine	\$10,000.00
American Red Cross of Northeast IN	Promote the blood mobile in Whitley County	\$5,000.00
Big Brothers Big Sisters of Northeast IN	Buddy program expenses in Whitley County	\$2,000.00
Boomerang Backpacks	Food for elementary students at Busco & WCCS	\$5,000.00
Cancer Services of Northeast IN	Services for Whitley Co. residents with cancer	\$5,000.00
Churubusco Child Care Center	Playground equipment	\$10,000.00
Churubusco Public Library	Summer Concert Series	\$1,000.00
Churubusco United Methodist Church Food Pantry	Freezers for the pantry	\$1,650.00
Community Harvest Food Bank	Farm Wagon for Whitley County	\$5,000.00
Early Childhood Alliance	Parent as Teachers program in Whitley County	\$2,500.00
Fort Wayne Philharmonic	Expenses for Holiday Pops Concert in Columbia City	\$2,500.00
Helpline of Whitley County	Purchasing beds & bedding for those in need	\$3,500.00
Mission 25	Startup costs for Miami Village project & matching grant	\$38,000.00
Night To Shine Fund	Help with expenses for special needs prom	\$5,000.00
Passages, Inc.	Funding for heat sensors in attics of clients' homes	\$4,000.00

Grantee	Program Description	Grant Amount
Respect Team	Programming at CCHS and CHS	\$2,000.00
Ronald McDonald Care Mobile	Expenses for pediatric mobile unit in Whitley Co.	\$9,000.00
Royal Family Kids Camp	Fund birthday party for foster kids attending camp	\$2,500.00
Salvation Army of Whitley County	Support grandparents' toy room for holidays	\$3,500.00
S. Whitley Area Emergency Food Bank	Purchasing freezers for the pantry	\$2,120.46
South Whitley Public Library	Funding for new addition to the library	\$30,000.00
T.R.O.Y. Center	Assistance for transportation costs	\$5,421.00
The Impact Center	Repairing windows at the pantry	\$2,855.00
The Potters Hand	Materials for handicapped ramp for elderly	\$1,000.00
Town of Churubusco	Rain garden for Busco Elementary to help with rain runoff	\$5,000.00
Trinity Evangelical Presbyterian Church	Support for children's programs & meals	\$5,000.00
Visiting Nurse	Operating expenses	\$5,000.00
Whitley County Consolidated Schools	Funding for sensory room	\$6,031.25
Whitley Co. Council on Aging & Aged	Funding for new outdoor park	\$35,000.00
Whitley Co. Energy Assistance Fund	Funding for energy assistance for Whitley Co. residents	\$5,000.00

TOTAL: \$219,577.71



The Foundation is proud to support Cancer Services of Northeast Indiana. In addition to offering wigs, nutritional supplements, and medical supplies, Cancer Services provides personal support for Whitley County families and their loved ones as they navigate the best course for treatment.

Next Level Whitley County

In early 2017, Whitley County began to experience a series of concerning events. The county unemployment rate dipped below 3% while the list of unfilled, skilled labor jobs grew exponentially. The Whitley County jail failed their state inspection due to understaffing and overcrowding, while also being identified as having the highest recidivism rate (77%) in the state of Indiana. A local elementary school principal requested funding to expand a before-and-after school program to include twenty-seven additional children because it was safer for them to stay at school than to be at home. One of the County's three local school districts was forced to close their middle school building because of declining enrollment, creating a contentious divide in a small community. The homeless shelter was on the verge of closing. The Indiana Hospital Association identified Whitley County as having an extraordinarily high rate of opiate prescriptions. The local, public community mental health organization offered no effective substance abuse treatment. The Whitley County Department of Children's Services tripled their staff size to accommodate the snowballing number of children requiring their intervention.

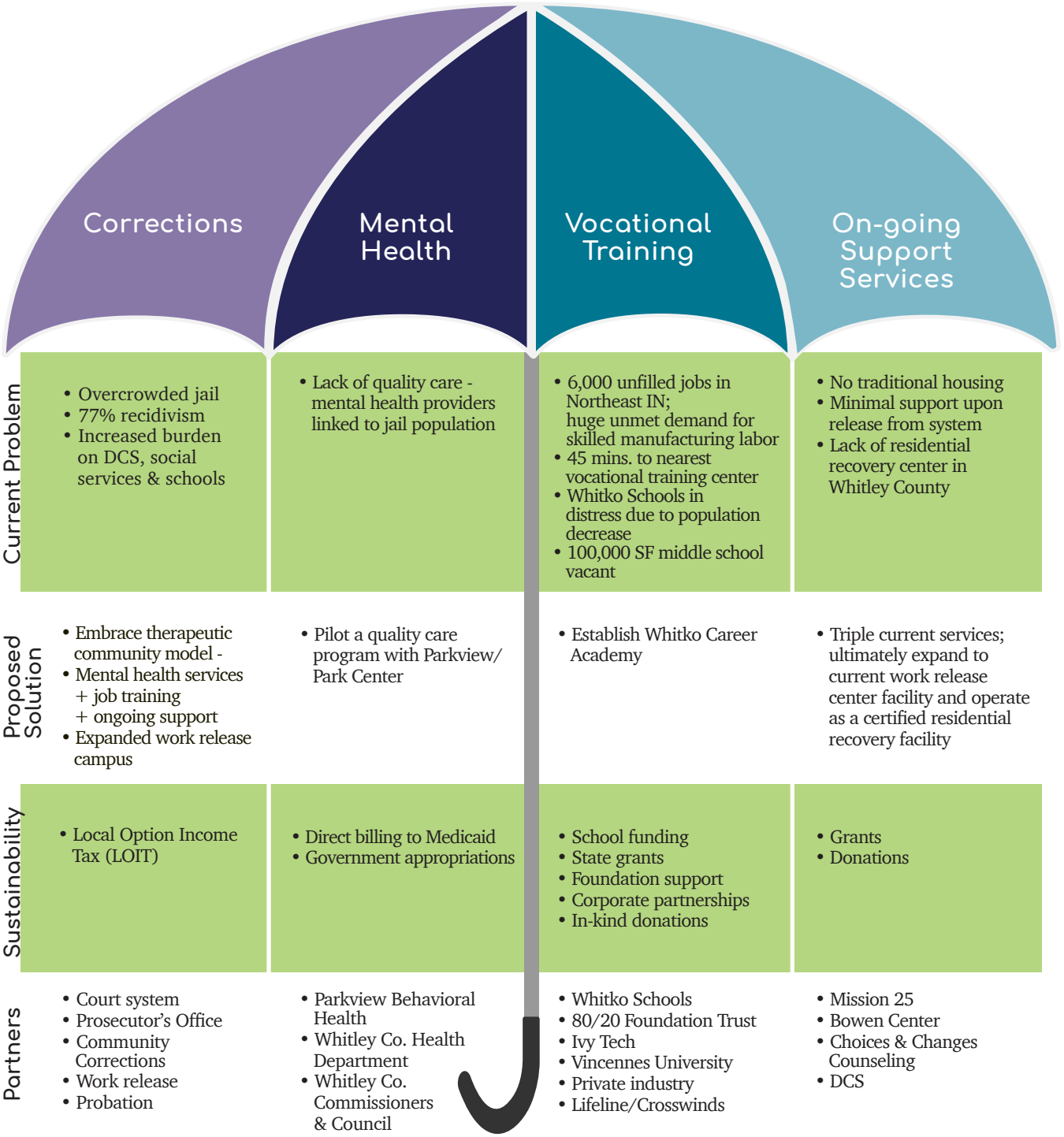
In May of 2018, the Community Foundation of Whitley County hosted a community forum titled *What Whitley Needs*. More than 100 people, representing a wide range of stakeholders, attended. At the end of the forum, the participants had identified mental health, vocational and career training, substance abuse, jail overcrowding and recidivism as the top community priorities. The time for courageous leadership had come and the stakes had never been higher.

In 2018-2019, the Community Foundation took aim and coordinated a strategic community framework known as Next Level Whitley County. The goals of this work include reducing jail recidivism, addressing employment shortages in our manufacturing community, and combating the growing burden on social service organizations who are seeing increased trauma in our youth. Unprecedented partners came to the table - elected officials, corrections leaders, judges, service providers, educators, funders, employers and healthcare professionals - to work under an umbrella free from silos, egos or agendas. New programs and services have been created for children affected by trauma, incarceration and addiction. The closed school building was re-opened as a career academy offering job training and certifications to both adults and high school students. A new Local Option Income Tax (LOIT) was passed that will generate much needed funding for expanded community corrections services. New mental health and substance abuse services have started in Whitley County and will be available to inmates in the jail. A 'therapeutic community' substance abuse treatment model is beginning in the Whitley County Work Release Center, targeting individuals who are returning to incarceration due to failed probation drug screens. Our local homeless shelter has re-launched as a licensed residential recovery center and has identified a three-year plan to expand their service platform.

Many significant changes have been made since the launch of Next Level Whitley County and the Community Foundation of Whitley County is committed to advancing our leadership. This work will guide our grant making into the foreseeable future. We will keep working with local funding partners such as the 80/20 Foundation Trust and the Dekko Foundation, as well as public funding streams such as our local government and Medicaid, to ensure the changes in our community are impactful and sustainable. We will forge ahead in identifying new and important partners. We will work to understand and address mental barriers to recovery, reduced recidivism, and employment – legally, logistically and lovingly in our area.

Next Level Whitley County

Understand & Address
Mental
Barriers to
Recovery, reduced recidivism &
Employment
Legally,
Logistically (and lovingly) in our
Area



STATEMENT OF ACTIVITIES

Year ended December 31, 2019

	Without Donor Restrictions	With Donor Restrictions	Total
Operating Revenue and Support:			
Contributions and pledges	\$ 173,970	\$ 1,984,505	\$ 2,158,555
Administrative fee income	357,199		357,199
Investment return (loss), net	31,160	4,342,439	4,373,599
Scholarship loan related income		10,115	10,115
Change in value of split-interest agreements		4,506	4,506
Total operating support and income	562,329	6,341,645	6,903,974
Net assets released from restrictions			
Satisfaction of purpose restrictions	521,047	(521,047)	
Pursuant to spending policy	1,498,846	(1,498,846)	
Operating Expenses:			
Program Services	1,691,780		1,691,780
Management and General	674,938		674,938
Fundraising Expenses	104,851		104,851
Change in net assets	110,653	4,321,752	4,432,405
Net assets at beginning of year	542,595	23,947,930	24,490,525
Net assets at end of year	<u>\$ 653,248</u>	<u>\$ 28,269,682</u>	<u>\$ 28,922,930</u>

STATEMENTS OF FINANCIAL POSITION

Year ended December 31

	2019	2018
ASSETS		
Cash and cash equivalents	\$ 2,917,267	\$ 2,550,389
Accounts receivable	5,123	9,759
Investment earnings and scholarship interest receivable	137,994	153,210
	4,497	5,623
Scholarship loans receivable, net		19,751
Investments	177,417	299,195
Property and equipment	26,133,015	21,805,951
Building improvements	370,795	370,009
Office and computer equipment	94,718	89,871
Less accumulated depreciation	465,513	459,880
	320,256	301,037
Land	145,257	158,843
	96,625	96,625
Total property and equipment	241,882	255,468
	<u>\$ 29,617,195</u>	<u>\$ 25,009,346</u>
LIABILITIES AND NET ASSETS		
LIABILITIES		
Accounts payable	\$ 1,703	\$ 839
Grants payable	151,561	116,426
Annuity reserves	82,102	81,789
Agency funds	458,899	409,767
Total liabilities	694,265	608,821
NET ASSETS		
Without donor restrictions	653,248	542,595
With donor restrictions	28,269,682	23,947,930
Total net assets	28,922,930	24,490,525
	<u>\$ 29,617,195</u>	<u>\$ 25,009,346</u>

Donors

2004 Men's Basketball Team
3 Rivers FCU
80/20 Foundation Trust
80/20 Inc
A. Hattersley & Sons, Inc.
A-1 Construction Inc.
ACFW Historical Society, Inc.
Ag Plus Inc.
AJ Machine, Inc.
American Indian Council, Inc.
Mary Ann Anderson
Keith and Melinda Antell
Rebecca Arford
James Argerbright
Donald L. Armstrong
Jason and Annette Arnold
Arts United
Mr. and Mrs. William Auer
Automotive MD
Sherri Ayres
Baber & Baber, P.C. Attorneys
at Law
Baden, Gage, & Schroeder, LLC
Kent and Michelle Badskey
Myrna Bailey
Barbara Baker
Pamela Baker
Mr. and Mrs. WM Frank Baldridge
Ball Furniture Company, Inc.
Cynthia Barnett
Jacob and Andrea Bartlett
Bart's Car Store, Inc.
James and Linda Bayman
BCS Management, Inc.
Beacon Credit Union
Mr. and Mrs. Dennis Bechtold
Todd and Amy Bechtold
Mr. and Mrs. Richard Beck, Jr.
Christopher Beebe
Robert and Currie, Roberta
Beeching

Cheryl Belcher
Michael and Teri Bemis
Wayne Bentz
Peyton Berg
Don and Sharlene Berkshire
Best-One Tire & Service of
Auburn
Christy Bianski
Big G's
David M. and Barbara L. Bilger
Brian and Vanessa Bills
Charles & Denise Bills
Kenneth and Mrs. Katherine Bills
Victor and Jacki Bishop
Blackburn & Green
Regina Blanchard
Bloom Gates Shipman &
Whiteleather
Jamie Bloom
Timothy J. and Beth Ann Bloom
Blue Moon Bakery LLC
Blue River Church of the
Brethren Women's Work
Blue River Digital
Blue River Estates Association

Bernadene Boggs
Donald and Carolyn Boggs
Kurt Boggs
Roger and Kelly Boggs
Cynthia Books
Allen and Mary Bower
Candy Bower
Douglas and Judith Bowyer
Boyd Machine & Repair Co., Inc.
Travis and Angela Bradford
Bradley Company
Jennifer Braun
Kathleen Brennan
Brook & Co. LLC
Dr. Jeffrey Brookes
Linda Bross
Grace Brower
Marcia Brown
Trevor Brown
Gene and Dutie Browning
Edna Bryant
BSNSports
Buchanan Automotive, Inc.
John and Bethann Buchanan
Karen Bucher



Members of the youth philanthropy program ACTS threw a picnic for Passages Clients in 2019.

Donors

Jerry Busche Family
Mr. and Mrs. Jon Butterbaugh
John and Mary Beth Camden
John and Vicki Camden
John T. Camden Construction Co.
Carnivore Fitness
Columbia City High School
Volleyball Booster Club
Columbia City Joint High School
Class of '50
Central Supply Company Inc.
Sara Chronister
Judith Church
Churubusco Family Dentistry
Churubusco High School
Churubusco Rotary
City Chevrolet
City of Columbia City
City Wings
Mr. and Mrs. Timothy Clark
Scott and Laura Clark
Class of '57
Cleveland Township Volunteer
Fire Department
Brett and Diana Clossin
Marcia Clupper
CLW Investments Inc.
Michael and Debbie Coats
M. Carolyn Cokl
Richard and Teresa Cokl
Colby Equipment Company, Inc.
Robert and Sheila Collier
Timothy and Deborah Collier
Columbia City Automotive
Supply, Inc.
Columbia City Consultants
Columbia City Dock, Inc.
Columbia City Optometry
Columbia City Plastics
Columbia City Redevelopment
Commission

Columbia City Rotary Club
Columbia City Wrestling Club
Columbia Soft Water Service, Inc.
Community Foundation of
Greater Fort Wayne
Dan Comparet
Richard and Sara Conrow
Doris Conwell
Jason and Amelia Cook
Ryan W. Cook
Dianne Cotten
Dewey and Sharon Cowen, C.P.A.
Richard Cox
Bruce Coyle
Coyote IT LLC
Craig Excavating & Land
Improvement
Adam and Melissa Craig
Casey Craig
James and Sheila Craig
Crooked Lake Association
Abbie Cross
Crossroads Bank
Becky Curless
Nicholas and Patricia Dahms
Dairy Queen Grill & Chill
Daniel Menu & Party Consulting
Darrin and Jill Daniel
Todd and Heidi Darley
Mr. and Mrs. Russell Davies
Brooke Dear
Dekko Foundation
DeMoney-Grimes Funeral Home
Suz Denney
Joan Dennis
Trudy Deutsch
Sue Devito
Dr. Gary and Ann Dillon
Sarah Doehla
John and Shirley Dome
Travis Doty

DRATS
Marilyn Drew
Duff's
Emma Duggins
Eagle Glen Golf Course
Chad and Jennifer Ebbinghouse
Shannon Ebbinghouse
Dwight Ebeling
James and Jeanette Eberhart
Eberly Photography &
Videography
Daryl and Carolyn Eberly
Edward Jones
Elks Lodge #1417
Dr. Robert Elliott
Shawn Ellis
Marvin and Alicia Evans
Event Ticket Authority Inc.
P.A. Eyermann and J.K. Raines
Greg and Ann Fahl
Max Fahl
Nancy Farber
Laura Farlow
Farmers Grain and Feed Co., Inc.
Mr. and Mrs. Max Felger
First Church of God
Beth Fisher
Five Star Distributing Inc
James R. and Katherine K. Fleck
Chris Fletcher
Flexaust
Jerry and Carol Flowers
Flow-Tech Plumbing & Heating, Inc.
Fort Wayne Bruins Hockey Club Inc.
Natasha Foster
K.E. and A.L. Francis
Kelsey Frankart
Freeland Enterprises, Inc.
Jeremy Freeman
Eric and Colleen French
Jacqueline Fries

Donors

Loren and Aimee Fry
Rachel Fry
Todd and Margaret Fry
Scott Gabriel
Matt Gaff
Robert and Rhonda Gage
Shirley Gage
Tamra Galm
Esther Gates Bower
Carrie Gates
Phyllis Gates
Lisa Gawthrop
Jerilyn Geiger
Sharon Geiger
Kaydean Geist
GEMM, Inc.
Richard and Mary Gensch
Mr. and Mrs. Al Germann
Frederick and Judy Geyer
Marjorie Giffin
Brian and Sheila Gillett
Gladd MD Integrative
Medicine, LLC
Dr. Jeffrey Gladd
Glenbrook Automotive Group
Richard and Kathy Glick
Global Construction Transport
Marvin A. Goble
Jerry Good
Goodrich Heating & Cooling, Inc
Dixie Goodrich
Wayne Gordon
Eleanor Grable
John and Lucy Grant
Joseph and Renee Grant
Lucy Grant
Linda Green
Grace Gunnlaugsson
Ryan Gustus
Vince Gutierrez
Joyce G. Hageman



Teens comprising our youth philanthropy program, HANDS (Helping Achieve New Directions through Students), threw a holiday party for little folks in the local Headstart Program.

Mr. and Mrs. Dean Hager
Gregory Hall
Ronald and Helen Hall
Jerry and Barbara Hand
Michael and Joyce Hardy
Harrison Harker
Warren Harker
Donna Harl
Harold Copp Farms, Inc.
Tim Harrigan
Rose Ann Harris
Beverly Harrold
Lida Harshman
James and Cinda Hart
Havel
Ronald Hawk Sr.
Joyce Hawkins
Gordon and Coleen Hayes
Patricia Haynes-Madden
Judith Hays

Janet Hazelett
Heartland Board of Realtors
Heat Power Engineering
Caitlin Heilman
Jack and Jane Helton
Lana Hendry
Dorothea Herb
Dylan Herendeen
Michael Hey
Marcus Higginbotham
Dr. and Mrs. Richard Hilker
Dawn Hinthorn
Eugene Hively
Dewayne Hockemeyer
Greggory W. Hockemeyer
Rev. and Mrs. John Hofer, Jr.
Jeffrey and P. Dawn Hoffman
Karen Hoffman
Kenneth and Ruth Hoffman

Donors

Marsha Hoffman
Holden Lake Property Owners
Association
Hollenbaugh Well Drilling Inc.
Greg and Traci Hollenbaugh
Randall and Patricia Holler
Larry and Anna Marie Holst
Angela Hook
Darcy Hoopengartner
Horizon Bank
Eric and Tonya Horvath
House of Spirits
Paul and Linda Houseman
James and Janet Howard
Heather Hower
Bryan and Robin Hughes
Hull Automotive
Steven and Laura Hull
Mr. and Mrs. Lee Humbert
Kay Hurley
Ted and Kay Hurley
Steve and Ronda Hurst
Illuminated Image
Impact CNC
Indiana Genealogical Society, Inc.
Indiana Materials Processing Inc
Indiana Philanthropy Alliance
Innovative Control Systems LLC
J & B Industrial Specialties, Inc.
J & J Insurance Solutions
J & K Communications Inc.
J.K. Walker and Associates, P.C.
Ronald and Janelle Jackson
Joseph and Karen Jacobson
Gail and Patty Jagger
Maxine Jagger
Jamin, Inc. dba/Rosencrans
Truck Repair
Jerry's Tire Service, Inc.
Jimmy and Marilyn Gebert
Jimmy John's

David T. and Jann Johnson
Emily Johnson
Rex and Deborah Johnson
Ronald and Sherry Johnson
Mr. and Mrs. David Jones
Kregg and Lanette Jones
Todd and Rhonda Jones
Mr. and Mrs. Craig Jordan
Frederick Jordan
JRB Management Inc.
Sandra Kayser
R.J. Keirn Trucking LLC
Shannon and Claudia Keirn
Thomas and Renie Keirn
Mr. and Mrs. David Kelley
Robert and Tacy Ellen Kellogg
Caroline Kelsey
Marilyn Kerch
Barbara Kessie
Douglas and Tina Kessie
Joseph and Darci Kessie
Kimberley Kessie
Ronda Kissling
Mr. and Mrs. Andrew Kitrush
Jerry and Sandra Klausing
Michael and Monica Kline
Barbara Klopfenstein
Ted and Janet Knafel
Knights of Columbus
Kroger
Krouse LLC
Rosemary Krull
Peggy Kunkle
Robert and Darlene Kurtz
Kimberly Lahey
Mr. and Mrs. Chad Laird
Lan Con
Norma Lancaster
Don and Jane Langeloh
Mr. and Mrs. James Lawrence
Mr. and Mrs. William Lee

Sharon Lee
Rebecca Lee Maggert
Bill and Lori Leeuw
John and Laura Lefever
Charles Lehman
Harold and Sharon Lehman
Lynn and Pamela Lehman
Randy and Joanna Lemler
Dr. Angela Leonhard
Lutheran Health Network
Larry and Ava Lillmars
Lilly Endowment, Inc.
Florence Linn
Ted and Galyn Linn
Jacqueline Liston
Little Turtle Elementary School
Mary Little
Logue Enterprises, LLC
Jill Long Thompson
Benny and Angela Long
Edgar and Sharan Long
Jean and Roger Long
Trent and Angela Long
William and Vicky Long
Robert and Grace Lotter
Michelle Love
Joan Luther
Erin Macadams
Macknick Philanthropy Advisors, LLC
Gregory and Linda Maggert
Mr. and Mrs. Walter Maley Jr.
Judith Manago
Rob and Jill Marr
Bryan Martin
Hugo Martz
Mr. and Mrs. Jeremy May
Rebecca May
Maryanne McClure
Dr. James and September
McConnell

Donors

McCoy Tax & Accounting, LLC
Pamela McCoy
R. L. McCoy, Inc.
Steve and Faye McManama
Bessie Medbury
Dr. John and Aileen Meier
Patricia Meier
Nelson and Linda Metzger
Ruth Metzger
Mr. and Mrs. John Meyer
Stanley and Betty Meyer
Chad and Cindy Michael
Kam and Patricia Michael
Micropulse Employee Giving
Micropulse, Inc.
Midwest Bonding Inc
Mihsihkinaahkwa Powwow
Jay Miller
Minear Real Estate LLC
Rob and Marlene Mishler
Jane Mitchell
John and Rita Mohr
Mr. and Mrs. David Molfenter
Jack and Judy Moore
Julia Moore
Michael Moore
More Farm Store
Andy and Toni More
Robin More
Randall and Sariah Morgan
Morsches-Builders Mart
David and Heidi Moseley
Mosser Construction, Inc.
Mr. and Mrs. David Mould
James and Christine Mowrey
Catherine Mueller
Susan Mulligan
Robert and Brenda Mundroff
Myers Hockemeyer & McNagny
Eddie and Martha Myers
Jon and Soultana Myers

Nathan and Lynn Myers
Richard Mylin
Seth Mynhier
N.U. Insulation, Inc.
Mr. and Mrs. James Nelson
Judith Nelsen
Richard and Karen Nelson
Courtney Ness
Greg and Chris Ness
Niblock Excavating, Inc.
Bryan and Hilary Nicodemus
Colin and Hilary Nicodemus
Larry and Alice Nicodemus
Terry and Renee Nicodemus
Janet Nicolson
Mr. and Mrs. John Nine
Harold F. Norman
North American Title Company,
LLC: Indiana Region
Northeastern REMC

Northern Heights Parents In
Education
John and Mrs. Lyn Ocken
Christopher O'Connell
Dr. Patricia O'Connor
Mr. and Mrs. John Ohneck
Old Settlers Association
On the Market Real Estate LLC
One Stop Auto Shop, Inc.
O'Reilly Auto Parts
Danny and Angel O'Reilly
Orizon Real Estate
Jeffrey and Donna Ott
Barry and Stacey Ousley
Rick and Heather Ousley
Betty Overdeer
William and Barbara Overdeer
Mike Pahl
Karl and Brenda Palmer
Leah Palmer



The Walter Malicki Whitko Art Fund allows high school students to participate in a summer art program that includes a visit to the Art Institute of Chicago.

Donors

Steve and Doris Reiff
Rhoades Automotive
Brad and Tracy Rhodes
Lori Rice
Richard Rider Electric Inc.
Charles and Margaret Richard
Richmond Construction
Richmond Electric LLC
Mark and Sarah Rickerd
Cristina Rider
George Riecke
Wayne Roberts
Blas and Danette Rodriguez
Phoebe Roehrs
Janel Rogers
Connie Rohrbach
Sue Roman
Robert and Sheila Ronk
Bryan and Carissa Rose
Jon Rosen, LLC
Kjell Rosenberg
Adele Rouch
Kay Roy
La Vicie Runkle
Scott Rupert
Michael D. Rush
Ric and Karen Rust
Ryan Daniel for Mayor
Sailrite Enterprises
Sam and Sara St. Clair
Brian and Suzette Salomon
Michael and Sharon Sands
William and Susan Schane
Mr. and Mrs. William
Schaubsluger
Cory and Jaime Schipper
Daniel Schnorr
School Spirit
Rex and Holly Schrader II
Rex Schrader Estate
Schrader Real Estate & Auction
Company, Inc.

Mr. and Mrs. Spencer
Pannabecker
Paragon Medical, Inc.
Mark and Tamera Parker
Parkview Whitley Hospital
Passages, Inc.
Rachelle Patrick
PDQ Workholding
Mary J. Penn
Dr. Brandon Penrod
Geoffrey and Nicole Penrod
Jonathon Peppler
Ryan Peppler
Chad and Denise Pequignot
Doris Peters
Thomas Peters
Michael Petersen
John and Cathy Petrie
Shirley Pfeiffer
Anthony and Amy Phillips
R. Dean Phillips
Nanette Pierce
Poor Jack, Inc.
Portside Pizza
Mark and Kathleen Powe
Preferred IT Group
Pride C Stores
Primary Engineering, Inc.
Purdue CES Education Fund -
Whitley County
Quality Inspection & Gage Inc.
Aaron Redman
Anne Redman
Carmen Redman
Lawrence and Bonnie Reed
Stephen and Carol Reed
Jana Reeg
Reelcraft Industries, Inc
Kathaleen Reese
Jerry and Nancy Reiff
Stan and Randee Reiff

George and Lola Schruppf
Devon Schuman
Scientific & Regulatory
Consultants (SRC)
Mary M. Scott
Mr. and Mrs. Steven Seigel
Shelley Sendelbach
Sensational Smiles Dentistry, PC
Shambaugh & Son, L.P.
Kerry and Colleen Shank
Duane and Paula Shepherd
Mr. and Mrs. Bryan Sherwin
Matthew and Lori Shipman
Maureen Shippy
Deb Shoemaker
Michael and Karda Shoults
Shroyer Farms, Inc.
Linda Shultz
Nancy Shultz
Kip and Sandi Shuter
Cory and Maudie Sickafoose
Steve and Beth Sickafoose
Sigma Phi Gamma Nu Theta
Chapter
Dr. Terry and Dr. Nancy Singer
Kris and Jill Slater
John Slavich
Millard and Carolyn Sloan
Smith and Sons Funeral Homes, Inc.
Angela Smith
C. Taron and Gloria Smith
Chauncey and Aleta Smith
Douglas Smith
Norma Smith
Russell and Derbeck-Smith
Therese Smith
Terry L. Smith P.C. Attorney At Law
Tim and Paula Smith
Tim Smith Construction
Timothy Smith

Donors

Mr. and Mrs. Justin Smoot
Rhonda Snavley
Janet Snep
Philip and Brenda Snep
William and Anita Snep
John and Reisa Snyder
Penny Snyder
Michael and Jeanette Sommers
Nancy Souers
Sound Ideas
South Whitley Amvets Post 2919
Bingo Fund
South Whitley Lions Club
Josephine Sparks
Brent Spaw
Sheila Spaw
Specialty Hybrids
Angela Speicher
Eric Speicher
Spring Green
Bradley and Tammy Sprunger
Bryan and Vicki Sprunger
SRKM Architecture, LLC
Craig and Rhonda Sroufe
Larry and Arlene Sroufe
Bruce and Patricia Stach
Mr. and Mrs. Terry Stahlhut
Dr. James Stapel
Star Financial Bank Inc.
Star Tire & Automotive Service, Inc.
D. Anthony and Lori Starkey
Patty Starkey
Starr CPA & Associates LLC
State Employees' Community
Campaign
Steel Dynamics, Inc.
Steffen Group
Cindy Stellhorn
Dwight A. Stetzel
Kevin and Dana Stevens

Sheena Stewart
Strebig Construction, Inc.
Doris Studebaker
Annette Stump
Olene Stureman
Summit City Chevrolet
Wayne and Janice Swender
Mary Swihart
Larry and Linda Tackitt
Gregory and Cynthia Taylor
Teghtmeyer Ace Hardware
Tenneco
Georgia Tenney
Gregg Terrill
Margaret Terry
The Creative Stitch Quilt Shop
The Wood Family
Theta Kappa Chapter of Delta
Theta Tau
Robert and Jan Thomas
Roger and Debra Thomas
William and Roxanne Thomas
Andrew Thompson



Nature is a great inspiration for these two budding artists attending Whitley County's Art Camp.

Derek and Samara Thompson
Pam Thompson
J. and S. Thomson
Tim Thomson
Victoria Thorson
Three Birds Casual
Jodi A. Tobin
William and Cynthia Toll
Mr. and Mrs. Chad Tonkel
Trier Automotive
Chris and Martha Trier
Victor and Linda Trowbridge
Philip and Colleen Trueblood
Scott Turner
Vincent and Patricia Turner
William Tutwiler
Terry Ulshafer
Ultra Electronics Undersea
Sensor Systems, Inc
Larry and Julie Underhill
United Oil Corporation
United Way of Central Indiana
United Way of Whitley County

Donors

Mr. and Mrs. Robert Van Houten
VanAm Seal Coating & Striping
Theodore Varga
Vendini, Inc.
Ralph and Shari Vergara
Verizon Foundation
VFW #5582
Ronald and Rachel Vinson
James and Carol Vosberg
VS Engineering, Inc.
Wagoner Construction
Bruce and Elaine Wakefield
Walker's Power Washing LLC
Wal-Mart
Marc Walter
Dennis and Beth Walther
Warner Electric
Chad and Natalie Warner
Jeffrey and Jenifer Warner
Rick and Laurie Warner
Dennis and Marjorie Warnick
Dean Warren
Janice Waterfall
Waterfall Family
Steven and Linda Weaver
Trey Weber
Eric and Tonya Weeks
Michael and Tonia Weigold
Mark and Dr. Amy Welker
Dean Wendel
Scott and Rita Werstler
Tim and Susan Werstler
West Bend Mutual Insurance
Company
Jill Western
Charles and Laura Wheeler
White Dog Screen Printing
Cynthia White
Dennis and Jeanne White
Whitehead Construction Inc.
John Whiteleather
Ricky D. Whiteleather

Whitko Dollars for Scholars
Whitley County 4-H Beef Club
Whitley County 4-H, Inc.
Whitley County Consolidated
Schools
Whitley County YMCA
Whitley Manufacturing
Wigent Excavating, LLC
Jade L. Wigent
William Wilder
Mary Wilkinson
Rex and Debra Wilkinson
Elaine Wilson
Windows, Doors & More Factory
Store, Inc.
Ann Wolfe
Pam Wolfe
Brian and Rhonda Wood
Danny and Linda Worrick
Jacqueline Worrick

WSM, Inc.
Daniel Wunderlin
Ken Wyant
James Yagel
YMCA of Greater Fort Wayne
Ronald and Jane Yohe
Angela R. Yorg
Alan & Karen Young
Charles and Tanya Young
Hanson and Joan Young
Mr. and Mrs. James Young
Scott Zent
Stan G. Zihlerl
Mr. and Mrs. Eric Zimmerman
Dawn Zion
Dr. Richard E. Zollinger
Dianne Zumbrun
Linda Zumbrun
Mr. and Mrs. David Zurbrugg



Here's to the soccer stars in South Whitley who are part of the community's Youth Sports Program.

Honorary Gifts & Memorials

In Honor of September McConnell
Macknick Philanthropy Advisors, LLC

In Honor of Tim York
Mr. and Mrs. Eric Zimmerman

In Honor of Smith & Sons Funeral Home
Holden Lake Property Owners Association

In Honor of Matt Dahms
Nicholas and Patricia Dahms
Matt Gaff
Eric and Tonya Horvath

In Honor of Stu and Bonnie Shipman
John and Laura Lefever

In Honor of Lee and Judy Baatz
Judith Nelson

In Honor of Kylie Johnson
Kelsey Frankart

In Memory of Scott Armstrong
John Slavich

In Memory of Les Bills
Heartland Board of Realtors
Mosser Construction, Inc.

In Memory of Sherry Bowyer
John Slavich

In Memory of Jim Brady
Connie Rohrbach

In Memory of Tom Drew
John Slavich
Dennis and Jeanne White

In Memory of Rod Ewing
John Slavich

In Memory of Russel and Evelyn Fahl
Pamela McCoy

In Memory of Sally Hays
Mr. and Mrs. David Jones

In Memory of Barbara K. Helfrich
Class of '57

In Memory of Richard Hoffman
Eugene Hively
Karen Hoffman
Kenneth and Ruth Hoffman
Karl and Brenda Palmer
Linda Shultz
Patty Starkey

In Memory of Leo R. Kemp
John Lefever

In Memory of Kenny Kerch
Marilyn Kerch

In Memory of Sherm Kneller
Becky Curless

In Memory of Michael McCoy
John Slavich

In Memory of Frederick "Fritz" Martin
Bryan Martin

In Memory of Paul "Pete" Martin
Bryan Martin

In Memory of Dorothy Mosher and Robert G. Mosher
Michael D. Rush

In Memory of Gloria Mullett
Marcia Brown
John and Laura Lefever
Kip and Sandi Shuter
Bruce and Elaine Wakefield
Ronald and Jane Yohe

In Memory of Danny Murphy
Orizon Real Estate

In Memory of Ardella Reust
Greg and Chris Ness

In Memory of Arnold Schipper
Bryan Martin



Rex Schrader led a purpose-driven life and we're so grateful that the Community Foundation was on his "to do" list. Rex served on the Board of Trustees for ten years and was president of the organization in 2003 & 2004. To say we lost a friend with his passing doesn't do justice to the thoughtful guidance and servant's heart that shaped our Foundation. He was one of a kind; they don't come any better.

Memorials



Memorial gifts are a perfect way to pay tribute to a friend or loved one. Many local organizations including our libraries have benefitted from these thoughtful contributions which continue to give back to the community for years to come.

In Memory of Norma Sheets
Steve and Ronda Hurst
Lynn and Pamela Lehman

In Memory of Terry Smith
James Argerbright
Mr. and Mrs. Richard Beck, Jr.
Suz Denney
Mr. and Mrs. Max Felger
Dixie Goodrich
Joyce G. Hageman
Mr. and Mrs. Dean Hager
Jack and Jane Helton
Dorothea Herb
Dewayne Hockemeyer
Rev. and Mrs. John Hofer, Jr.
Mr. and Mrs. Lee Humbert
Ronda Kissling
Kimberly Lahey
Mr. and Mrs. William Lee
Charles Lehman

Dr. James and September McConnell
Mr. and Mrs. David Mould
Robert and Brenda Mundroff
Mike Pahl
Jonathon Peppler
Rex and Holly Schrader II
Mr. and Mrs. Steven Seigel
Norma Smith
Tim Smith Construction
Mr. and Mrs. Justin Smoot
Mr. and Mrs. Terry Stahlhut
Star Bank Financial Service
Dawn Zion
Mr. and Mrs. David Zurbrugg

In Memory of Jack C. Stalf
Dennis and Jeanne White

In Memory of Barbara Bates Thomas
Class of '57

In Memory of C. Ray Vogts
Michael D. Rush

In Memory of Floyd Weaver
Nancy Shultz

In Memory of Thomas York
Dianne Cotton
Dr. and Mrs. Richard Hilker
Frederick Jordan
Rosemary Krull
Dr. John and Aileen Meier
Mr. and Mrs. John Meyer
Mr. and Mrs. John Nine
Mr. and Mrs. John Ohneck
Nancy Souers
William Tutwiler
Mr. and Mrs. James Young

In Memory of Evelyn Zumbrun
Linda Zumbrun

Board of Directors & Staff



L to R (front): Jacie Worrick, Sharlene Berkshire, Tim Bloom, Gloria Smith, Andy More, Rhonda Jones, (back) George Schrumpf, Marcia McNagny, Gary Dillon, Greg Fahl and Don Armstrong. Not pictured: Carl Jacquay.

Board of Directors

Don Armstrong	Rhonda Jones
Sharlene Berkshire	Marcia McNagny
Tim Bloom	Andy More
Gary Dillon	George Schrumpf
Greg Fahl	Gloria Smith
Carl Jacquay	Jacie Worrick

Grants Committee

Cindy Barnett	Carla Horn
Baily Beiswanger	Gene Klingaman
Tim Bloom	Pam McCoy
Hallie Grant	Andy More
Donna Harl	Jade Wigent



L to R: Margaret Malcom, September McConnell, John Lefever, Vanessa Bills, Brooks Walker, Carol Flowers, Sheena Stewart, Sharlene Berkshire and Andrew Thompson.

Staff Members

September McConnell , CEO	Margaret Malcom , Part-time Receptionist
Vanessa Bills , COO	John Slavich , ACTS Coordinator
Sheena Stewart , Business Manager	Andrew Thompson , HANDS Coordinator
Carol Flowers , Administrative Coordinator	Brooks Walker , Intern
John Lefever , Development Consultant	Chelsea Pettigrew , Intern

Finance Committee

Randy Holler	Bill Tucker
Todd Jones	John Whiteleather
John Lefever	

Lilly Scholarship Committee

Katie Dewitt	Stu Shipman
Mary Hartman	Ruth Stanley
Sam Ladowski	Jacie Worrick

remembering to say "thanks"

Thank you, thank you, thank you; we can't say it enough! To the many donors who have placed their trust in the Community Foundation to carry out their charitable giving, we offer our sincerest appreciation. Your vote of confidence is our top priority. We have made every attempt to acknowledge each gift. If a mistake has occurred, please let us know so that we can correct our records and promptly acknowledge your contribution.





Excellence. Accountability. Impact.™

Rising to New Heights
 Community Foundation of Whitley County
 400 N. Whitley Street • Columbia City, IN 46725
 P: 260-244-5224 • F: 260-244-5724
www.cfwhitley.org



The Community Foundation of Whitley County Inc., has been found to be in compliance with the National Standards established by the Council on Foundations. These standards establish legal, ethical, effective practices and assure donors, government and media of our commitment to best practices. To achieve this certification, foundations go through a rigorous peer review of organizational and financial policies and procedures. Community Foundations use these standards to promote self-regulation and set consistent expectations for their boards. These standards provide a framework for documenting, communicating and providing training and technical assistance to advance best practices.